

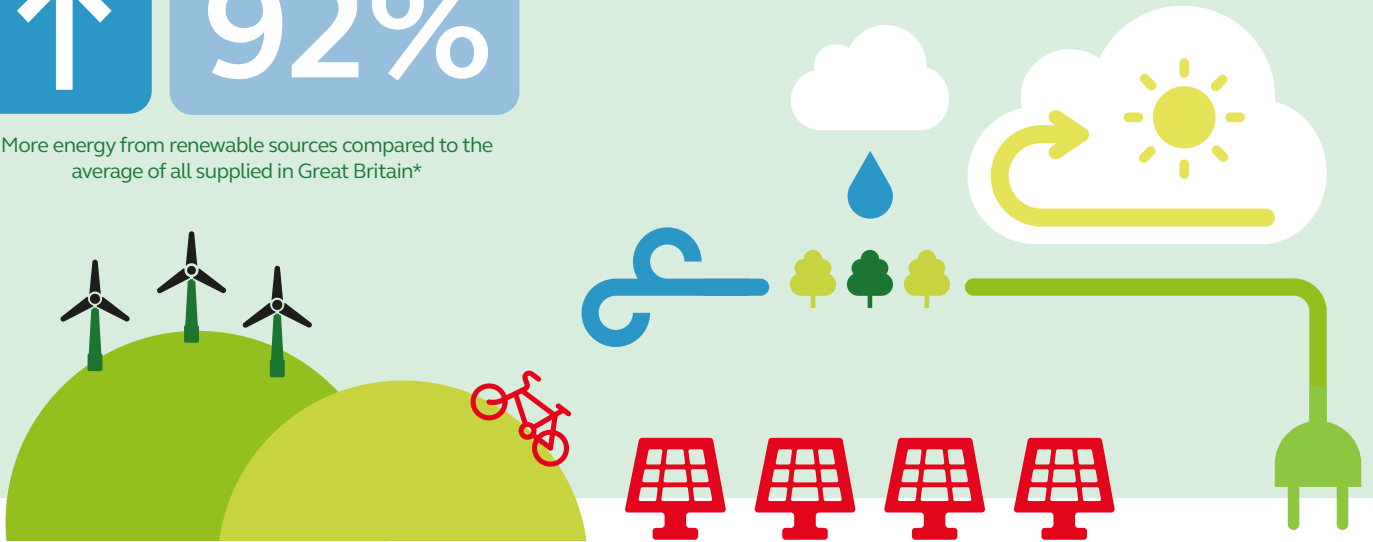


Fuel mix

(relates to electricity supplied in the period April 2014 to March 2015)



More energy from renewable sources compared to the average of all supplied in Great Britain*



Electricity supplied has been sourced from the following fuels	Electricity supplied by kinex % of total	Average for GB (for comparison) % of total
Coal	31%	26.7%
Natural Gas	27%	29.7%
Nuclear	3%	22.2%
Renewable	37%	19.3%
Other	2%	2.1%
Total	100%	100%

SSE Radioactive waste calculations
0.00022623g per kWh

Carbon
SSE CO₂g/kWh 398

This table confirms the source of the total electricity supplied by SSE Energy Supply Limited through SSE, Southern Electric, Scottish Hydro, SWALEC and Atlantic during the period from 1 April 2014 to 31 March 2015.

Environmental Impact

For information on the environmental impact of your electricity supply, visit our website at www.kinex.co.uk or write to us at kinex, Longley House, Longley Lane, Manchester, M22 4SY.

* kinex electricity is supplied by SSE Energy Supply Limited registered in England and Wales No. 03757502 and a member of the Scottish and Southern Energy Group. The Registered Office of SSE Energy Supply Limited is 55 Vastern Road, Reading, Berkshire, RG1 8BU.