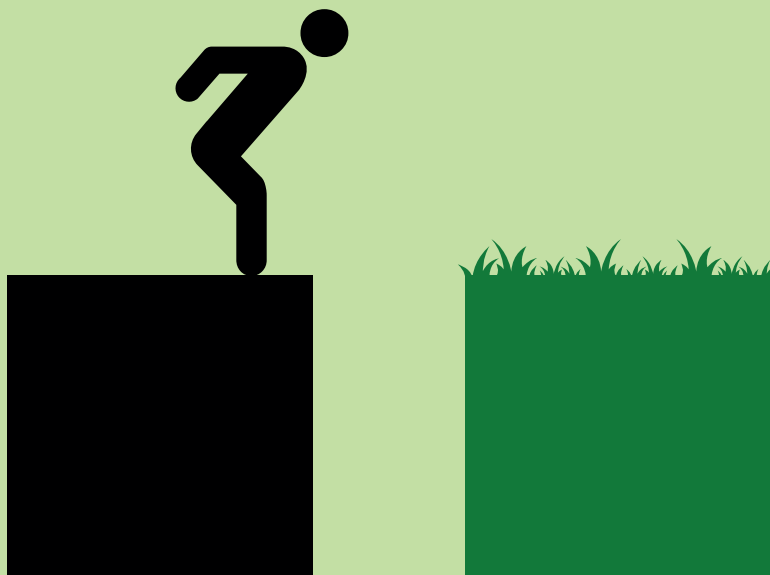


# We're here to help you make the leap.

Worried about being charged for leaving your current supplier?

Relax, we'll credit up to £300 to your kinex account if you're invoiced for an early termination charge from your current supplier.\*



\*Terms and conditions apply – see overleaf.

Reliable business  
services





## Early termination charges information.

Not all contracts have early termination charges (ETCs). If your contract includes an ETC, you should have been advised about this when you agreed to the contract.

ETCs can only be charged if your contract states this and you were told about it at the point of sale.

We don't believe you should have to pay to switch to kinex. If you are charged an ETC, we'll credit your account to the value of the ETC up to a maximum of £300.

For more information, call us on **0161 465 6656**.

### Terms and conditions

Applies to fixed line and broadband customers only. There is a maximum of one credit of up to £300 in total per customer. To qualify for this offer, you must send kinex a copy of the invoice from your previous supplier that shows the value of the ETC and the date of the invoice, which must be after the date on which kinex placed an order to transfer your services to kinex. kinex may require a copy of your existing contract to validate you are being correctly charged an ETC. Any ETC credit can only be used to pay for services provided by kinex. If the contract between you and kinex is terminated as described in clauses 8.1(b) and 8.1(c) of your terms and conditions, you must repay all ETC credits in full.

**Reliable business  
services**

